

# CERTIFICATE OF ANALYSIS

\* FOR QUALITY ASSURANCE PURPOSES. NOT A CALIFORNIA COMPLIANCE CERTIFICATE.

PRODUCED: JUN 06, 2024

SAMPLE: NO. 1 (CONCENTRATE) // CLIENT:

// BATCH: PASS



**MATRIX:** CONCENTRATE  
**CATEGORY:** INHALABLE  
**SAMPLE ID:** BCL-240531-025  
**COLLECTED ON:** MAY 31, 2024  
**RECEIVED ON:** MAY 31, 2024  
**SAMPLE SIZE:** 6 G

## CANNABINOID OVERVIEW

<b>TOTAL THC:</b>	<b>28.86628 %</b>
<b>TOTAL CBD:</b>	<b>0 %</b>
<b>TOTAL CANNABINOIDS<sup>††</sup>:</b>	<b>29.19269 %</b>
<b>SUM OF CANNABINOIDS<sup>†</sup>:</b>	<b>33.248247 %</b>



POTENCY

PEST  
PASS

MYCO  
PASS

METALS  
PASS

## BCL-03: CANNABINOID POTENCY BY HPLC-UV // JUN 03, 2024

ANALYTE	AMT
CBC	ND
CBCA	< LOQ
CBD	ND
CBDA	ND
CBDV	ND
CBDVA	ND
CBG	ND
CBGA	ND
CBN	ND
Δ <sup>8</sup> -THC	ND
Δ <sup>9</sup> -THC	0.27757 %
THCA	32.91480 %
THCV	ND
THCVA	0.05569 %
TOT THC**	28.86628 %    288.6628 mg/g
TOT CBD**	ND                      ND

\*\* TOTAL THC = DELTA-8-THC + (DELTA-8-THCA X 0.877) + DELTA-9-THC + (THCA X 0.877)

\*\* TOTAL CBD = CBD + (CBDA X 0.877)

† SUM OF CANNABINOIDS = CBC + CBCA + CBD + CBDA + CBDV + CBDVA + CBG + CBGA + CBN + DELTA-8-THC + DELTA-9-THC + THCA + THCV + THCVA

†† TOTAL CANNABINOIDS = (CBC + CBD + CBDV + CBG + CBN + DELTA-8-THC + DELTA-9-THC + THCV) + (0.877 \* (CBCA + CBDA + CBDVA + CBGA + THCA + THCVA))

## TERPENOID TESTING BY HS-GC/FID

ANALYTE	AMT	AMT	LOD/LOQ ( )	PASS/FAIL
TOTAL TERPENES	ND	ND		N/A
α-PINENE	NT	NT		N/A
CAMPHENE	NT	NT		N/A
β-PINENE	NT	NT		N/A
β-MYRCENE	NT	NT		N/A
Δ <sup>3</sup> -CARENE	NT	NT		N/A
α-TERPINENE	NT	NT		N/A
D-LIMONENE	NT	NT		N/A
P-CYMENE	NT	NT		N/A
α-OCIMENE*	NT	NT		N/A
β-OCIMENE*	NT	NT		N/A
γ-TERPINENE	NT	NT		N/A
TERPINOLENE	NT	NT		N/A
LINALOOL	NT	NT		N/A
ISOPULEGOL	NT	NT		N/A
GERANIOL	NT	NT		N/A
β-CARYOPHYLLENE	NT	NT		N/A
α-HUMULENE	NT	NT		N/A
CIS-NEROLIDOL	NT	NT		N/A
TRANS-NEROLIDOL	NT	NT		N/A
GUAIOL	NT	NT		N/A
α-BISABOLOL	NT	NT		N/A
1,8-CINEOLE*	NT	NT		N/A

\* BEYOND SCOPE OF ACCREDITATION

SAMPLE WAS TESTED AS RECEIVED. THE RESULTS RELATE ONLY TO THE ITEMS TESTED. ALL LQC SAMPLES REQUIRED BY SECTION 15730 OF CALIFORNIA CODE OF REGULATIONS TITLE 4 DIVISION 19 DEPARTMENT OF CANNABIS CONTROL WERE PERFORMED AND MET THE ACCEPTANCE CRITERIA. ALL DECISION RULES ARE ESTABLISHED BY THE DCC.

**RESULTS CERTIFIED BY:** DZOANA KLISARA, B.S.C.  
 LABORATORY DIRECTOR, BELCOSTA LABS  
 JUN 06, 2024

*Dzoana Klisara*

**BCL-13: PESTICIDE TESTING BY GC/MS // JUN 04, 2024**

ANALYTE	LIMIT	AMT (µg/g)	LOD/LOQ (µg/g)	PASS/FAIL
CAPTAN	0.7 µg/g	ND	0.03115/0.09433	PASS
CHLORDANE	Any amt	ND		PASS
CHLORDANE CIS		ND	0.01101/0.0334	N/A
CHLORDANE TRANS		ND	0.01054/0.03186	N/A
CHLORFENAPYR	Any amt	ND	0.02375/0.07189	PASS

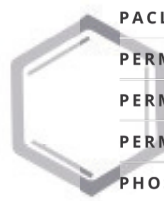
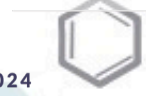
ANALYTE	LIMIT	AMT (µg/g)	LOD/LOQ (µg/g)	PASS/FAIL
CHLORPYRIFOS	Any amt	ND	0.01107/0.03364	PASS
DICHLORVOS	Any amt	ND	0.01167/0.03535	PASS
METHYL PARATHION	Any amt	ND	0.01338/0.04056	PASS
PENTACHLORONI-TROBENZENE	0.1 µg/g	ND	0.01392/0.04222	PASS



**BCL-05: RESIDUAL PESTICIDE ANALYSIS BY LC-MS/MS ESI // JUN 05, 2024**

ANALYTE	LIMIT	AMT (µg/g)	LOD/LOQ (µg/g)	PASS/FAIL
ABAMECTIN	0.1 µg/g			PASS
ACEPHATE	0.1 µg/g			PASS
ACEQUINOCYL	0.1 µg/g			PASS
ACETAMIPRID	0.1 µg/g			PASS
ALDICARB	Any amt			PASS
AZOXYSTROBIN	0.1 µg/g			PASS
BIFENAZATE	0.1 µg/g			PASS
BIFENTHRIN	3 µg/g			PASS
BOSCALID	0.1 µg/g			PASS
CARBARYL	0.5 µg/g			PASS
CARBOFURAN	Any amt			PASS
CHLORANTRANIL-IPROLE	10 µg/g			PASS
CLOFENTEZINE	0.1 µg/g			PASS
COUMAPHOS	Any amt			PASS
CYFLUTHRIN	2 µg/g			PASS
CYPERMETHRIN	1 µg/g			PASS
DAMINOZIDE	Any amt			PASS
DIAZINON	0.1 µg/g			PASS
DIMETHOATE	Any amt			PASS
DIMETHOMORPH	2 µg/g			PASS
DIMETHOMORPH I				
DIMETHOMORPH II				
ETHOPROPHOS	Any amt			PASS
ETOFENPROX	Any amt			PASS
ETOXAZOLE	0.1 µg/g			PASS
FENHEXAMID	0.1 µg/g	ND		PASS
FENOXYCARB	Any amt	ND		PASS
FENPYROXIMATE	0.1 µg/g	ND		PASS
FIPRONIL	Any amt	ND		PASS
FLONICAMID	0.1 µg/g	ND	0.0046/0.01393	PASS
FLUDIOXONIL	0.1 µg/g	ND	0.03245/0.09834	PASS
HEXYTHIAZOX	0.1 µg/g	ND	0.00409/0.01238	PASS
IMAZALIL	Any amt	ND	0.012/0.03637	PASS
IMIDACLOPRID	5 µg/g	ND	0.00796/0.02411	PASS
KRESOXIM-METHYL	0.1 µg/g	ND	0.00989/0.02997	PASS
MALATHION	0.5 µg/g	ND	0.00701/0.02124	PASS

ANALYTE	LIMIT	AMT (µg/g)	LOD/LOQ (µg/g)	PASS/FAIL
METALAXYL	2 µg/g	ND	0.0058/0.01757	PASS
METHIOCARB	Any amt	ND	0.00885/0.02681	PASS
METHOMYL	1 µg/g	ND	0.00837/0.02537	PASS
MEVINPHOS	Any amt	ND		PASS
MEVINPHOS I		ND	0.001/0.00303	N/A
MEVINPHOS II		ND	0.00529/0.01603	N/A
MYCLOBUTANIL	0.1 µg/g	ND	0.01719/0.0521	PASS
NALED	0.1 µg/g	ND	0.01059/0.0321	PASS
OXAMYL	0.5 µg/g	ND	0.00617/0.01869	PASS
PACLOBUTRAZOL	Any amt	ND	0.01076/0.03262	PASS
PERMETHRIN	0.5 µg/g	ND		PASS
PERMETHRIN CIS		ND	0.00993/0.03008	N/A
PERMETHRIN TRANS		ND	0.01265/0.03833	N/A
PHOSMET	0.1 µg/g	ND	0.00601/0.01822	PASS
PIPERONYLBUTOXIDE	3 µg/g	ND	0.00261/0.00791	PASS
PRALLETHRIN	0.1 µg/g	ND	0.00989/0.02996	PASS
PROPICONAZOLE	0.1 µg/g	ND	0.00577/0.01747	PASS
PROPOXUR	Any amt	ND	0.00593/0.01798	PASS
PYRETHRINS	0.5 µg/g	ND		PASS
PYRETHRINS PYRETHRIN I		ND	0.00435/0.01318	N/A
PYRETHRINS PYRETHRIN II		ND	0.00386/0.01169	N/A
PYRIDABEN	0.1 µg/g	ND	0.00388/0.01176	PASS
SPINETORAM	0.1 µg/g	ND		PASS
SPINETORAM J		ND	0.00694/0.02103	N/A
SPINETORAM L		ND	0.00902/0.02734	N/A
SPINOSAD	0.1 µg/g	ND		PASS
SPINOSAD A		ND	0.00799/0.02422	N/A
SPINOSAD D		ND	0.00275/0.00834	N/A
SPIROMESIFEN	0.1 µg/g	ND	0.00693/0.021	PASS
SPIROTETRAMAT	0.1 µg/g	ND	0.00537/0.01627	PASS
SPIROXAMINE	Any amt	ND	0.00549/0.01663	PASS
TEBUCONAZOLE	0.1 µg/g	ND	0.00874/0.02647	PASS
THIACLOPRID	Any amt	ND	0.00458/0.01389	PASS
THIAMETHOXAM	5 µg/g	ND	0.00395/0.01196	PASS
TRIFLOXYSTROBIN	0.1 µg/g	ND	0.00354/0.01072	PASS



**BCL-05: MYCOTOXIN TESTING BY LC-MS/MS // JUN 05, 2024**

ANALYTE	LIMIT	AMT (µg/kg)	LOD/LOQ (µg/kg)	PASS/FAIL
AFLATOXIN B1		ND	1.97/5.96	N/A
AFLATOXIN B2		ND	1.32/3.99	N/A
AFLATOXIN G1		ND	1.6/4.86	N/A
AFLATOXIN G2		ND	1.46/4.44	N/A
AFLATOXINS	20 µg/kg	ND		PASS
OCHRATOXIN A	20 µg/kg	ND	1.35/4.08	PASS

**BCL-020: HEAVY METAL TESTING BY ICP-MS // JUN 03, 2024**

ANALYTE	LIMIT	AMT (µg/g)	LOD/LOQ (µg/g)	PASS/FAIL
ARSENIC	0.2 µg/g	< LOQ	0.001/0.05	PASS
CADMIUM	0.2 µg/g	ND	0.0002/0.05	PASS
LEAD	0.5 µg/g	< LOQ	0.0003/0.05	PASS
MERCURY	0.1 µg/g	< LOQ	0.0001/0.01	PASS

**ACCREDITATIONS**



**A2LA ACCREDITED**

- BCL-020: HEAVY METAL TESTING BY ICP-MS
- BCL-03: CANNABINOID POTENCY BY HPLC-UV
- BCL-05: MYCOTOXIN TESTING BY LC-MS/MS

- BCL-05: RESIDUAL PESTICIDE ANALYSIS BY LC-MS/MS ESI
- BCL-13: PESTICIDE TESTING BY GC/MS

\* FOR QUALITY ASSURANCE PURPOSES. NOT A CALIFORNIA COMPLIANCE CERTIFICATE.